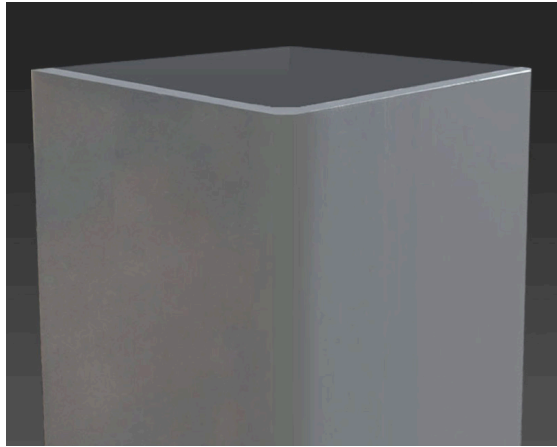


NLS-SSSP-WG
Square Straight Steel Pole



Avail. Size

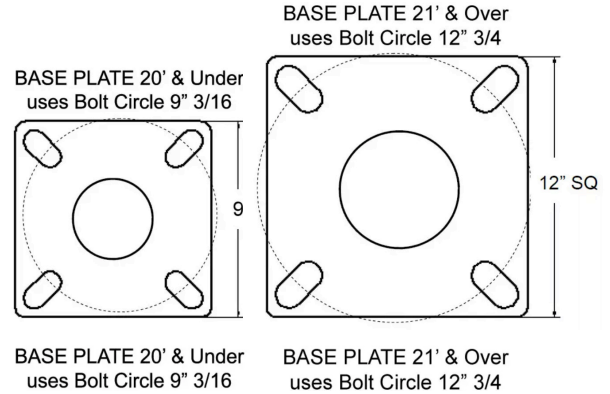


Customer Name: _____

Project Name: _____

Note: _____

Type: _____



Height:

- 10'-35'

Pole Shaft:

- The pole shaft material is a weldable grade hot rolled commercial quality carbon steel tubing with a minimum yield of 46,000 psi. Conforms to ASTM A500 Grade B Standards. Poles have ground lug welded inside hand-hole opposite side of the hand-hole. Pole shaft is welded to base plate on top and bottom of base plate.

Base Plate:

- The Base Plate is manufactured from structural hot rolled steel that meets or exceeds a minimum yield strength of 36,000 psi, conforms the ASTM-A36 standards. Base Plate vary in size from 1" thick for poles 21 feet and over, 3/4" thick for poles 10 to 20 feet.

Anchor Bolts:

- All anchor bolts are hot dipped galvanized steel and come with two galvanized nuts and washers per bolt. Minimum yield strength 50,000 psi. Anchor bolts are not included for Custom Bolt Circle.

Base Cover:

- All base covers are fabricated two-piece 6063 aluminum and powder coated to match the pole.

Hand-Hole:

- A reinforced hand-hole is 12" on center from the base plate and is constructed of 3" x 5" rectangular steel tubing which is welded to pole shaft for added strength. The hand-hole covers are provided with internal bridge support and powder coated to match pole finish.

Pole Cap:

- All poles come with a removable polymer pole cap installed. All pole caps are black finish.

Finish:

- All poles are treated with shot blast media for a near white finish, power blasted with 100 psi prior to powder coat application. Electrostatically applied polyester powder coat with a 3 to 5 mil thickness for maximum adherence.

Marine Grade Finish:

- All poles are washed through a 5-stage cleaning system with a deionized rinse, a 3 to 5 mils zinc rich durable polyester primer powder coat, followed by a 3 to 5 mils super durable polyester powder coat finish.

Galvanized Finish:

- All poles are Hot Dipped Galvanized in a multi stage process. Galvanizing Specification, Zinc (Hot Dipped Galvanized) per ASTM A 123/A 123M - 02
- Zinc coatings on threaded materials shall conform to specification A 153 /A 153M. The coating shall be continuous and reasonably smooth and uniform in thickness and in weight.
- Galvanizing Adherence - The Zinc coating shall withstand handling consistent with the nature and thickness of the coating and normal use of the article without peeling or flaking.

Galvanized Under Powder:

- Galvanized Under Powder (GUP) adheres to above galvanized specification, and the second stage is a light sand blast on the outside of the pole, third stage is a 3-5 mils polyester powder coat finish for maximum adherence.

Vibration Dampener:

- The Vibration Dampener is factory installed. The Vibration Dampener consists of a rugged galvanized chain coated with heavy duty polyester tubing that is factory secured at the bottom 2-3rds of the pole and field secured by contractor at the base during installation.



Sample Ordering

Model	Height	Pole Dimension	Gauge	Base Pattern	Mounting	Color	Bolts	Options
SSSL	10' (10)	4" Square (4S)	.120	(10'-20')	Single (SGL)	Bronze Textured (BRZ)	3/4" x 30" (3430)	GFI Kit (GF120A) 20 Amp
Square Straight Steel Pole (SSSP)	12' (12)	5" Square (5S)	Wall Thickness (11G)	9" - 10 3/8" Bolt Circle (9BC)	Double (D-90) (D-180)	White Textured (WHT)	1" x 36" (136)	Weather Proof Receptacle
	14' (14)	6" Square (6S)	.180	(22'-35')	Triple (T-90)	Smooth White Gloss (SWT)	Less Anchor Bolts (LAB)	GFI Provision Only (PROV)
	16' (16)		Wall Thickness (7G)	11 1/2" - 14" Bolt Circle (12BC)	Quad (QD)	Silver (SVR)		Galvanized (GLV)
	18' (18)			Custom Bolt Circle (CBC) * Consult Factory	No Drill (ND)	Green Textured (GRN)		Galvanized Under Powder (GUP)
	20' (20)			*Tenon OptionT	Tenon	Hunter Green Textured (HGN)		1/2" Coupling (COUP) * Specify Location
	22' (22)			2 3/8" Round (T2R)		Black Textured (BLK)		Vibration Dampener (VD)
	24' (24)			3" Round (T3R)		Smooth Black Gloss (SBK)		Extra Hand Hole (XHH) * Specify Location
	25' (25)			3 1/2" Round (T312R)		Graphite Textured (GPH)		Marine Grade Finish (MGF)
	26' (26)			4 1/2" Round (T412R)		Grey Textured (GRY)		
	28' (28)			3 1/2" Square (T312S)		Custom (CS)		
	30' (30)			4 1/2" Square (T412S)				
	35' (35)			5 1/2" Square (T512S)				

Max. allowable EPA - SSSP poles (per AASHTO LRFDLTS-1)

MODEL NO.	Shaft Length ft	Wall thickness in'	Shaft dia., in.	Base Plate, n.	BUG Rating	Bolt Circle, in.	Bolts	80 mph	Max. wt (lb)	90 mph	Max. wt (lb)	100 mph	Max. wt (lb)	110 mph	Max. wt (lb)	115 mph	Max. wt (lb)	120 mph	Max. wt (lb)	130 mph	Max. wt (lb)	140 mph	Max. wt (lb)	150 mph	Max. wt (lb)	160 mph	Max. wt (lb)	170 mph	Max. wt (lb)	180 mph	Max. wt (lb)		
SSSP-10-45-11G-9BC-3430	10	0.120	4	9" sq.	9	3/4"x30"	9	20	250	20	250	20	250	20	250	20	250	20	250	20	250	20	250	17.8	250	15.6	250	13.2	250	11.4	250		
SSSP-12-45-11G-9BC-3430	12	0.120	4	9" sq.	9	3/4"x30"	9	20	250	20	250	20	250	20	250	20	250	20	250	19.5	250	16.3	250	13.7	250	11.9	250	10.1	250	8.7	218		
SSSP-14-45-11G-9BC-3430	14	0.120	4	9" sq.	9	3/4"x30"	9	20	250	20	250	20	250	20	250	20	250	19.3	250	15.9	250	13.1	250	10.9	250	9.1	227	7.3	183	6.3	158		
SSSP-15-45-7G-9BC-3430	15	0.188	4	9" sq.	9	3/4"x30"	9	20	250	20	250	20	250	20	250	20	250	17.7	250	14.7	250	11.9	250	9.9	248	8.3	208	6.9	173				
SSSP-16-45-11G-9BC-3430	16	0.120	4	9" sq.	9	3/4"x30"	9	20	250	20	250	20	250	18.1	250	16.1	250	14.7	250	11.9	250	9.7	242	7.9	198	6.1	153	5.1	128	4.1	103		
SSSP-18-45-11G-9BC-3430	18	0.120	4	9" sq.	9	3/4"x30"	9	20	250	20	250	19.2	250	15.2	250	13.2	250	12	250	9.2	230	7.2	180	5.6	140	4.6	115	3.2	80	2.2	80		
SSSP-20-45-11G-9BC-3430	20	0.120	4	9" sq.	9	3/4"x30"	9	20	250	20	250	16.1	250	12.3	250	10.7	250	9.7	242	7.1	178	5.3	133	3.9	98	2.7	68	1.7	60	0.9	60		
SSSP-20-45-7G-9BC-3430	20	0.188	4	9" sq.	9	3/4"x30"	9	20	250	20	250	15.7	250	14.1	250	12.5	250	9.5	238	7.7	193	5.7	143	4.3	108	3.1	78	2.1	60				
SSSP-20-55-11G-9BC-3430	20	0.120	5	9" sq.	9	3/4"x30"	9	20	250	20	250	19.3	250	16.9	250	15	250	11.6	250	9	226	6.9	172	5.1	128	3.7	92	2.5	63				
SSSP-20-55-7G-9BC-3430	20	0.188	5	9" sq.	9	3/4"x30"	9	20	250	20	250	20	250	20	250	20	250	17.9	250	14.4	250	11.6	250	9.3	232	7.4	184	5.8	144				
SSSP-22-45-11G-12BC-136	22	0.120	4	12" sq.	12	1"x36"	12	20	250	16.7	250	12.4	250	9.2	231	7.9	198	6.8	169	4.9	123	3.4	85	2.2	60	1.2	60	0.4	60	0	-		
SSSP-22-45-7G-12BC-136	22	0.188	4	12" sq.	12	1"x36"	12	20	250	20	250	19.2	250	14.8	250	13	250	11.5	250	8.9	223	6.8	171	5.2	130	3.8	96	2.7	68	1.8	60		
SSSP-22-55-11G-12BC-136	22	0.120	5	12" sq.	12	1"x36"	12	20	250	20	250	19.3	250	14.6	250	12.7	250	11	250	8.2	206	6	151	4.2	106	2.8	71	1.6	60	0.6	60		
SSSP-22-55-7G-12BC-136	22	0.188	5	12" sq.	12	1"x36"	12	20	250	20	250	20	250	20	250	20	250	15.9	250	12.6	250	10	250	7.9	197	6.1	152	4.6	116				
SSSP-24-45-11G-12BC-136	24	0.120	4	12" sq.	12	1"x36"	12	19.6	250	14.0	250	10.4	250	7.2	180	6	250	5.2	130	3.2	80	1.8	60	1	60	0	60	0	0	-	-		
SSSP-24-45-7G-12BC-136	24	0.188	4	12" sq.	12	1"x36"	12	20	250	20	250	16.4	250	12.4	250	10.8	250	9.4	234	7	175	5.1	128	3.6	90	2.4	60	1.4	60	0.5	60		
SSSP-24-55-11G-12BC-136	24	0.120	5	12" sq.	12	1"x36"	12	20	250	20	250	16.2	250	11.9	250	10.1	250	8.6	215	6.1	152	4.1	102	2.4	61	1.1	60	0	0	-	-		
SSSP-24-55-7G-12BC-136	24	0.188	5	12" sq.	12	1"x36"	12	20	250	20	250	20	250	20	250	19.1	250	16.9	250	13.1	250	10.1	250	7.7	192	5.8	144	4.1	103	2.7	68		
SSSP-25-45-11G-12BC-136	25	0.120	4	12" sq.	12	1"x36"	12	18.2	250	13.2	250	9.4	235	6.6	165	5.4	135	4.4	110	2.8	70	1.2	60	0.4	60	0	0	-	0	-	-		
SSSP-25-45-7G-12BC-136	25	0.188	4	12" sq.	12	1"x36"	12	20	250	20	250	15.1	250	11.3	250	9.8	244	8.4	210	6.1	153	4.3	108	2.9	71	1.7	60	0.7	60	0	-		
SSSP-25-55-11G-12BC-136	25	0.120	5	12" sq.	12	1"x36"	12	20	250	20	250	14.7	250	10.6	231	9	224	7.5	188	5.1	127	3.1	78	1.6	60	0.3	60	0	0	-	-		
SSSP-25-55-7G-12BC-136	25	0.188	5	12" sq.	12	1"x36"	12	20	250	20	250	20	250	20	250	17.6	250	15.4	250	11.8	250	8.9	223	6.7	166	4.7	118	3.2	80	1.9	60		
SSSP-30-65-7G-12BC-136	30	0.188	6	12" sq.	12	1"x36"	12	20	250	20	250	20	250	16.6	250	14	250	11.8	250	8	201	5.1	126	2.7	66	0.7	60	0	0	-	-		
SSSP-32-65-7G-12BC-136	32	0.188	5	12" sq.	12	1"x36"	12	20	250	20	250	17.5	250	13	250	11.2	198	9.6	239	6.9	173	4.8	119	3.1	77	1.7	60	0.6	60	0	-		
SSSP-32-65-7G-12BC-136	32	0.188	6	12" sq.	12	1"x36"	12	20	250	20	250	20	250	16.4	180	14.1	250	12.1	250	8.8	219	6.2	154	4	101	2.3	60	0.9	60	0	-		
SSSP-35-65-7G-12BC-136	35	0.188	5	12" sq.	12	1"x36"	12	20	250	19.3	250	13.8	250	9.6	240	8	199	6.5	162	4.1	102	2.1	60	0.6	60	0	0	-	0	-	-		
SSSP-35-65-7G-12BC-136	35	0.188	6	12" sq.	12	1"x36"	12	20	250	20	250	17.3	250	12.2	250	10.1	250	8.3	207	5.3	132	2.9	72	1	60	0	0	-	0	-	-		
SSSP-40-65-7G-12BC-136	40	0.188	5	12" sq.	12	1"x36"	12	20	250	13.2	250	8.4	210	4.8	120	3.3	83	2	60	0	0	0	0	0	0	0	0	0	-	0	-	-	
SSSP-40-65-7G-12BC-136	40	0.188	6	12" sq.	12	1"x36"	12	20	250	16.7	250	10.7	250	6.2	155	4.4	110	2.8	70	0.1	60	0	0	0	0	0	0	0	0	-	0	-	-

*Pole Assemblies With EPA=9.0 Require Specific Review

***Anchor Bolts are NOT included with Custom Bolt Circle.
*Do NOT pour concrete referencing this drawing. Consult Factory.**

***All wind loading calculations are based on sustained wind force plus an additional 1.3 gust.**



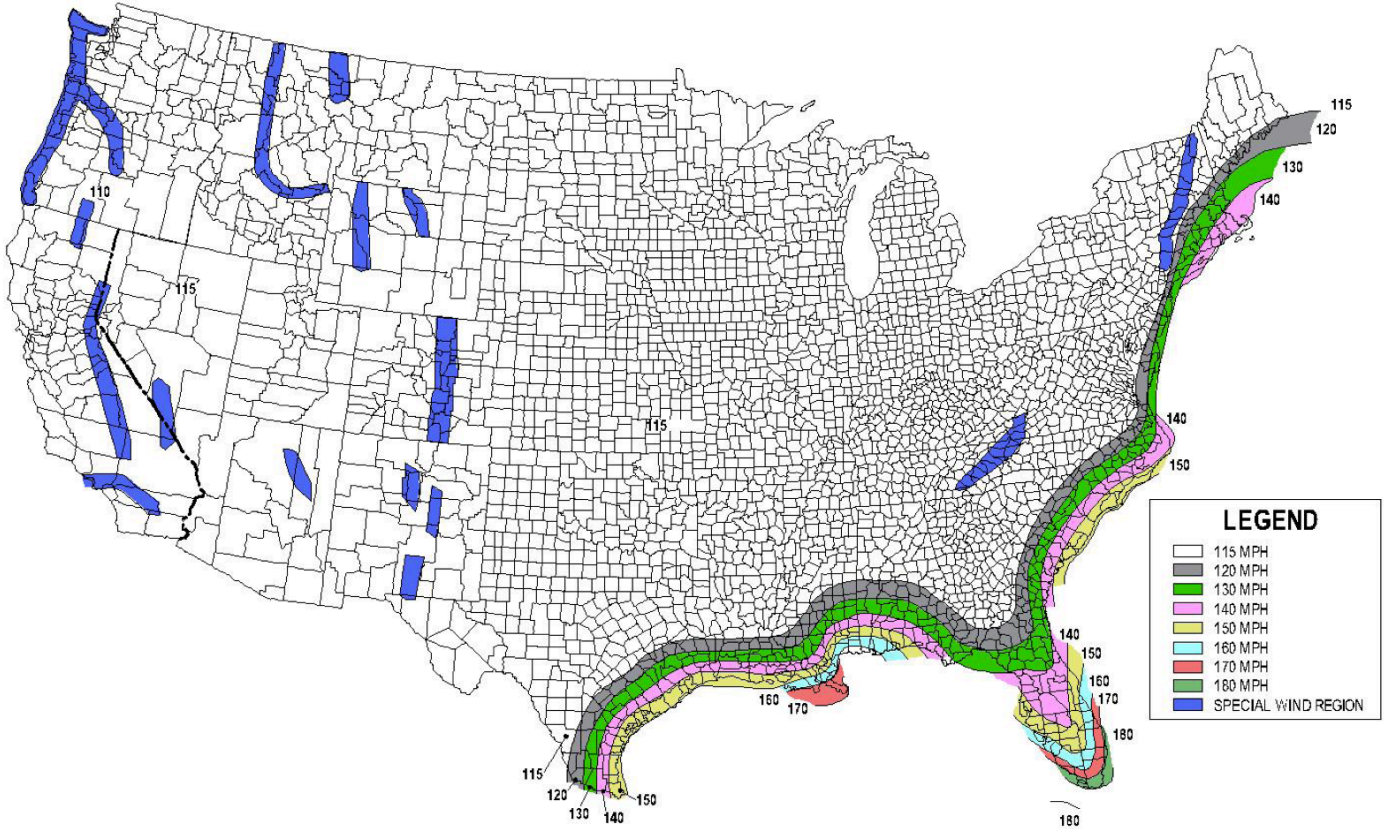
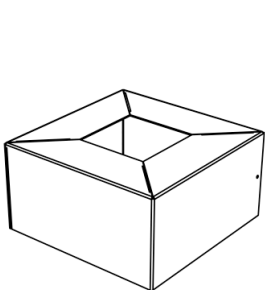
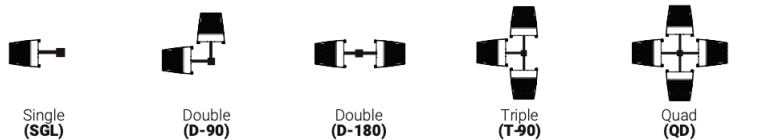


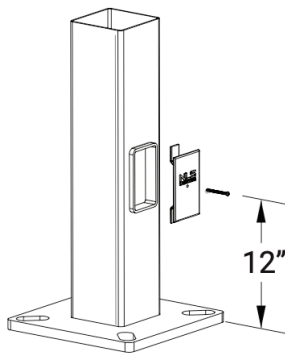
FIG. 3.8-1b - 700-Year MRI Basic Wind Speed, mph (AASHTO LRFDLTS-1)

- 1) All wind load calculations are based on sustained wind force plus and additional 1.3 gust
- 2) Wind Map is to be used as a reference only. Please coordinate with local agencies for further review.
- 3) Wind Map values are based on a 50 year mean recurrence. These values do not account for severe conditions, such as hurricanes, tornadoes, etc...
- 4) For review of poles with additional configurations (arms, banners, shorter/longer pole lengths, etc...), please contact factory.

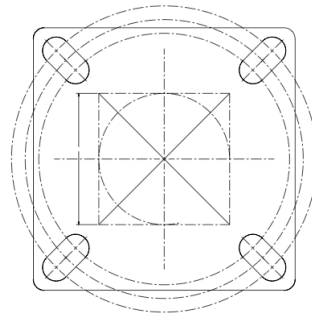
MOUNTING CONFIGURATION



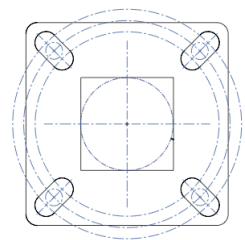
Base Cover



Base Detail



12" Base Detail



9" Base Detail

